

# Houston Ship Channel Expansion

## Project 11

The Port of Houston is an asset to the state and national economies, and vital to the transport of goods nationwide. In 2018, there were nearly 9,000 vessel calls for a total of over 20,000 ship movements within the port — that's as much as the next three largest ports combined (Los Angeles, Long Beach, and New York/New Jersey).<sup>1</sup>

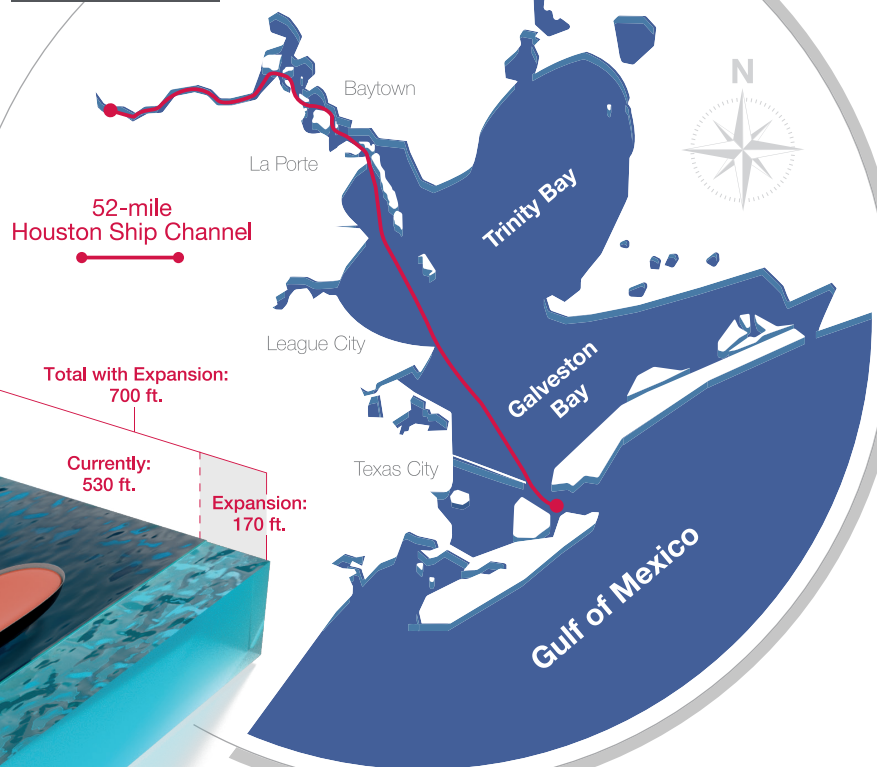
Widening the nation's busiest waterway to allow for improved two-way traffic means safer and more efficient economic growth.

## The Challenge

Energy and manufacturing exports are increasing at the Port of Houston, as well as vessel size. The Houston Ship Channel (HSC) is one of the most complex to navigate due to high traffic volume and its narrow, shallow, and winding characteristics.

Currently, an approximately 100 ft. bypass makes for nearly impossible and dangerous maneuvers.

### HOUSTON



Total with Expansion:  
700 ft.

Currently:  
530 ft.

Expansion:  
170 ft.



increase in avg.  
LPG vessel length  
from 2007 to 2018<sup>2</sup>

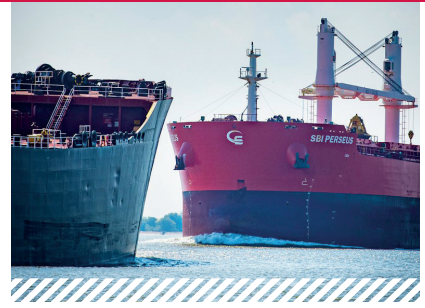


increase in avg.  
container ship length  
from 2006 to 2018<sup>2</sup>

Sources:  
1. Greater Houston Port Bureau  
2. TxDOT Maritime

[ExpandTheHoustonShipChannel.com](http://ExpandTheHoustonShipChannel.com)

# Why Channel Expansion Matters



Safe and efficient movement of cargo along the Houston Ship Channel is critical to U.S. energy security, sustaining and growing jobs and local, regional and national economic growth. New demands resulting from energy and manufacturing growth as well as an expanded Panama Canal are putting pressure on the Houston Ship Channel system today. Improvements are necessary to ensure safe two-way traffic and maintain economic benefits to the nation, both today and in the future.

## The Right Solution

Widening the proposed Bay Reach segment of the Houston Ship Channel from 530 feet to 700 feet in width and additional channel-deepening improvements are essential to the growth of local and nationwide commerce. We are committed to working together with stakeholders to achieve this goal for long-term prosperity.

## The Time to Act Is NOW

The business-as-usual improvement process could take until 2030.

U.S. economy can't wait —  
dredging must begin by 2021.

Ask members of Congress to authorize the Houston project that widens, deepens and maintains this nationally essential waterway into the future.

[ExpandTheHoustonShipChannel.com](http://ExpandTheHoustonShipChannel.com)

## Port Houston Economic Impact 2018

U.S.

**\$802 BILLION**  
in economic  
value

**More than  
3.2 MILLION**  
jobs supported

**\$38 BILLION**  
in tax  
revenue

Texas

**\$340 BILLION**  
in economic  
value

**More than  
1 MILLION**  
jobs supported

**\$5.6 BILLION**  
in tax  
revenue

A wider channel is a safer channel that continues to provide economic benefit for the region, state and nation.